



netvigator everywhere®

Wireless Modem E5838

Installation & User Guide

Thank you for choosing NETVIGATOR Pocket Wi-Fi

This product includes the following items:

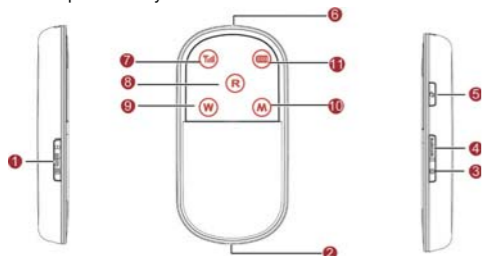
- Wireless modem E5838 1 pc.
- Li battery 1 pc.
- USB cable 1 pc.

Features and standards

- Bands: HSPA/UMTS 2100/1900/900 MHz
- EDGE/GPRS/GSM 1900/1800/900/850 MHz
- Data speeds: Up to 7.2 Mbps download speed and up to 5.76 Mbps upload speed
- Wi-Fi standard: Wi-Fi 802.11b/g
- Wi-Fi signal coverage: around 10m (subject to extraneous factors)
- SMS service
- Micro SD card: Supports up to 16GB
- Battery type: Li (rechargeable)
- Capacity: 3.7V, 1500mAh
- Maximum working time: 4 hours
- Maximum standby time: 100 hours
- Support English and Traditional Chinese Operating Systems

Your NETVIGATOR Pocket Wi-Fi

The following illustrations depict the NETVIGATOR Pocket Wi-Fi's appearance, while the actual product may differ.



- 1. Micro SD card slot**
Hold the Micro SD card.
- 2. USB connector**
Connect to the PC's USB interface or charger.
- 3. Power switch**
Press and hold for 2 seconds to power on or off.
- 4. Wi-Fi/WPS switch**
 - Press to enable or disable Wi-Fi.
 - Press and hold to enable or disable WPS (Wi-Fi protected setup).
- 5. Dial key**
Press and hold to make a connection or disconnect.*
- 6. Battery button**
Press and hold to open battery cover.
- 7. Signal indicator**
 - Off: No signal.
 - Fast blinking red: The USIM/SIM card is not fitted or the PIN code has not been verified.
 - Steady red: Signal strength is weak.
 - Steady yellow: Signal strength is medium.
 - Steady green: Signal strength is strong.
- 8. Roam indicator**
 - Blinking red: Registered with an overseas operator.
- 9. Wi-Fi indicator**
 - Off: Wi-Fi and WPS disabled.
 - Fast blinking: WPS enabled.
 - Steady on: Wi-Fi enabled.
- 10. Mode indicator**
 - Double blinking green: The network is inexistent or no network is registered.
 - Fast blinking green: Connecting to network.
 - Blinking green: Registered with 2G network.
 - Steady green: 2G is connected.
 - Blinking blue: Registered with 3G/HSPA network.
 - Steady blue: 3G/HSPA is connected.

11. Battery indicator

- Blinking: Battery being charged.
- Fast blinking red: Battery is very low and needs charging.
- Steady red: Battery power weak.
- Steady yellow: Battery power normal.
- Steady green: Battery power sufficient.

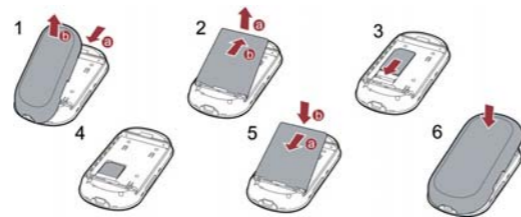
*Only apply to "Manual" mode

Note:

- NETVIGATOR Pocket Wi-Fi will automatically enter power-saving mode with all indicators dark (except Mode and Roam indicator) if modem has been idle for 15 seconds. Press any button and the indicators will reappear.
- Press and hold Wi-Fi/WPS switch and dial key at the same time for 5 seconds to restore factory defaults.

Preparation

USIM/SIM Card and Battery



Note:

- Keep the USIM/SIM card out of children's reach.
- The USIM/SIM card and its metal contacts can be easily damaged by scratching or bending. Take care when you carry, load or remove it.
- Do not remove the USIM/SIM card and Micro SD card when in use. Removing cards during an operation may damage them, as well as the device, and data stored on cards may be corrupted.

Micro SD card



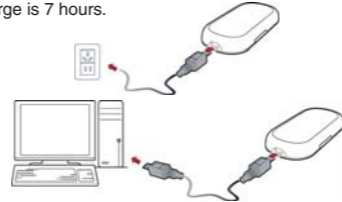
- Remove the rubber cap from the Micro SD cardslot, then insert the Micro SD card into the slot.
- After inserting the Micro SD card completely, replace the rubber cap.
- To remove the Micro SD card, open the rubber cap and press the Micro SD card gently. The Micro SD card will then pop up automatically to take out.

Note:

- The Micro SD card is an optional accessory.

Charging the Battery

Connect the NETVIGATOR Pocket Wi-Fi and PC with the data cable. Please switch off the NETVIGATOR Pocket Wi-Fi before recharge. Recommended period for first-time charge is 7 hours.



Note:

- The battery discharges even while not being used. If not used for a long time, please recharge the battery before use.
- Charging time depends on environmental temperature and the age of the battery.
- Do not strike, throw or cause any kind of violent shock to the battery, otherwise liquid leakage, body damage, overheating, fire or explosion may occur.
- The battery can be recharged but eventually wears out.
- If the battery lasts for a shorter time period than usual after being charged, replace with a battery of the same type.

User Guide

1 Router mode



Connect to Internet

- Open the battery cover and take out the battery. Copy the default SSID and the security key from the label on the modem.
- Default connection mode is "Always On". Hold the power button for 2 seconds, when Mode indicator and Wi-Fi indicator are both on, NETVIGATOR Pocket Wi-Fi is ready.
- If Overseas Roaming indicator and Mode indicator are both on, data roaming usage will be charged according to the standard roaming rate.

Modify system settings (if applicable)

Customer can modify the SSID, security key and other system settings.

- Make sure your computer has connected to Pocket Wi-Fi.
- Open your browser and enter "http://192.168.1.1"
- The login screen should appear. Both the default login name and password are "admin".



- After login, choose "Quick Setup" from the left-hand side menu.
- Configure Pocket Wi-Fi Mobile Connection
 - "Always On" means the unit automatically dials up for Internet access when switched on.
 - "Manual" means the unit dials up for Internet access manually when switched on.
 - "On demand" means the modem will dial only when you attempt to send data through the Internet.



- Configure SSID. Enter your preferred SSID and press "Next".



- Configure security key. Default security mode is WPA. Enter your preferred security key and press "Next". Be aware of the difference between upper and lower-case characters. You are advised to keep a copy of the key for future reference.



- Confirmation screen. Click "Finish" to confirm.
- Set up completed. NETVIGATOR Pocket Wi-Fi will reboot automatically. You are required to connect to the device again.
- Share your SSID and security key with friends if you want to share the NETVIGATOR Pocket Wi-Fi access with them.

Note:

- A maximum of 5 Wi-Fi devices are supported simultaneously.

2 Modem mode

In this mode, you can use the modem-based Internet service by connecting the NETVIGATOR Pocket Wi-Fi to your PC with the USB cable. If the Wi-Fi is enabled, you can access the Internet in router mode.



Installing the Pocket Wi-Fi Connection Manager

Procedure for installing the NETVIGATOR Pocket Wi-Fi depends on your PC's operating system. The following section uses Windows XP as an example.

- Connect the wireless modem to your PC.
- The OS (operating system) automatically detects and recognizes new hardware and activates the installation wizard.

Note:

- If the auto-run program does not respond, find the AutoRun.exe file in the home directory of NETVIGATOR CD-ROM icon. Then double-click AutoRun.exe to run the program.
- Follow the installation wizard prompts.
- After the program is installed, the Pocket Wi-Fi Connection Manager's shortcut icon will be displayed on the desktop.

Starting the NETVIGATOR Pocket Wi-Fi Connection Manager

After NETVIGATOR Pocket Wi-Fi Connection Manager is installed, it will launch automatically once the NETVIGATOR Pocket Wi-Fi is turned on and connected to your PC.

You can also double-click the shortcut icon on the desktop to launch the NETVIGATOR Pocket Wi-Fi Connection Manager.



Connecting to Internet

- Select the profile name "PCCW" in the drop-down list box.
- Click the "Connect" button to connect to the network.
- Launch the browser on your PC to surf the Internet.

Creating and sending a SMS message

With the NETVIGATOR Pocket Wi-Fi Connection Manager installed on your PC, you can send SMS messages to mobile phones or other terminal devices that support the SMS function.

3 PCCW Wi-Fi Connection

NETVIGATOR Pocket Wi-Fi Users are also entitled to a free PCCW Wi-Fi Account. To access the Internet via PCCW Wi-Fi, go to a PCCW Wi-Fi hotspot and follow these instructions:

- Unplug NETVIGATOR Pocket Wi-Fi.
- Connected to PCCW Wi-Fi Hotspot.
- Launch your Internet Browser.
- Type any URL in the address field and you will be redirected automatically to the PCCW Wi-Fi login page (please switch off the Proxy server).
- Please select PCCW Wi-Fi Monthly Plus & Pay-As-You-Go Users and follow the on-screen instructions, provide your login ID and password to login to the service. Your default login details are:

Login ID: NETVIGATOR Everywhere SIM card mobile number@PCCW Mobile
Password: First 6 digits of customers' HKID number